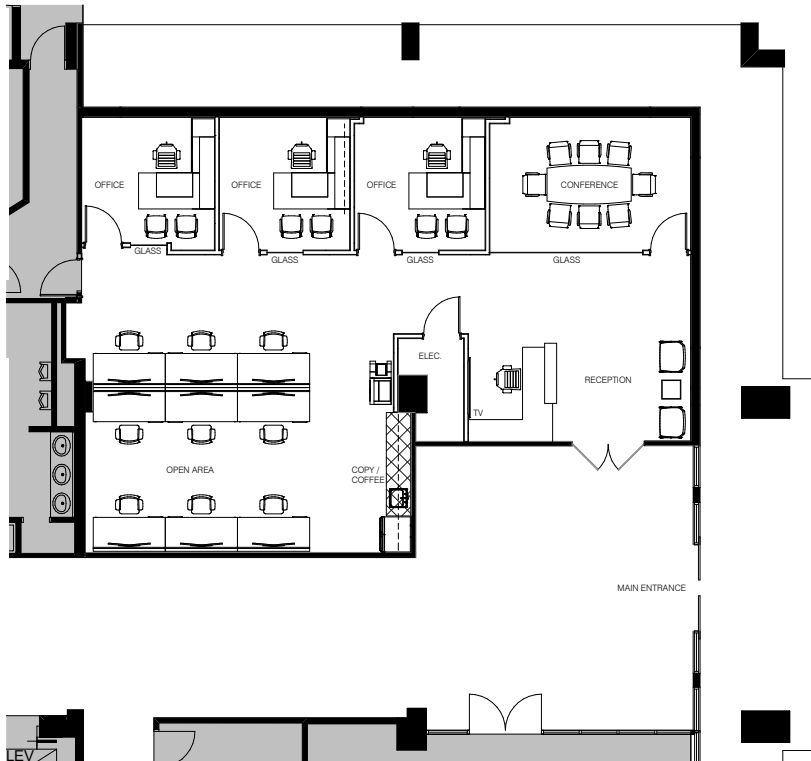




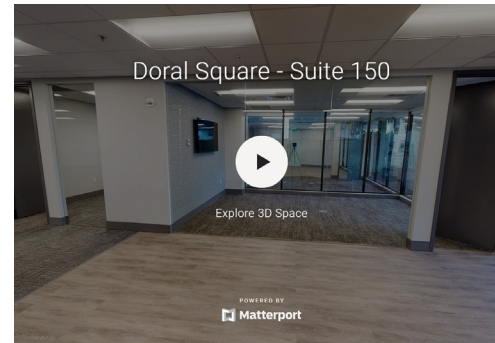
THE OFFICES AT
DORAL SQUARE

8600 NORTHWEST 36TH STREET | DORAL, FLORIDA 33166

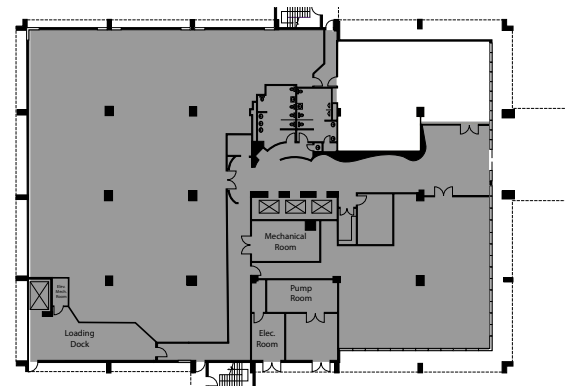
SUITE 150 | 1,980 S.F.



 [click here to tour the space](#)



FULL FLOOR



CONTACT US

ERIC GROFFMAN

+ 305 728 7396

eric.groffman@am.jll.com

CAMERON TALLON

+1 305 960 8407

cameron.tallon@am.jll.com

EDWARD QUINON

+ 305 302 6200

edward.quinon@am.jll.com

**Disclaimer: This is a sample floor plan and remains subject to further revisions/modifications*